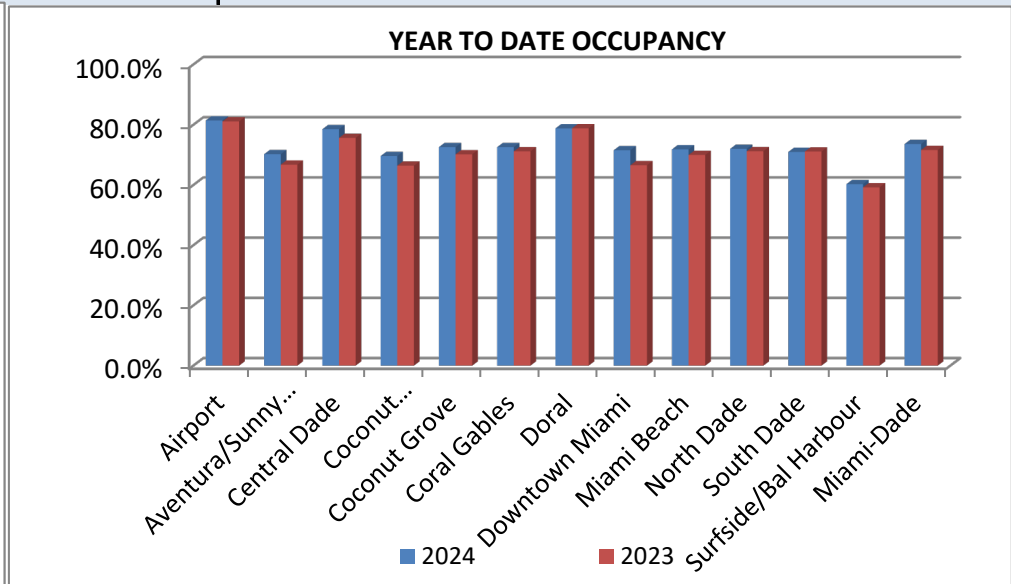
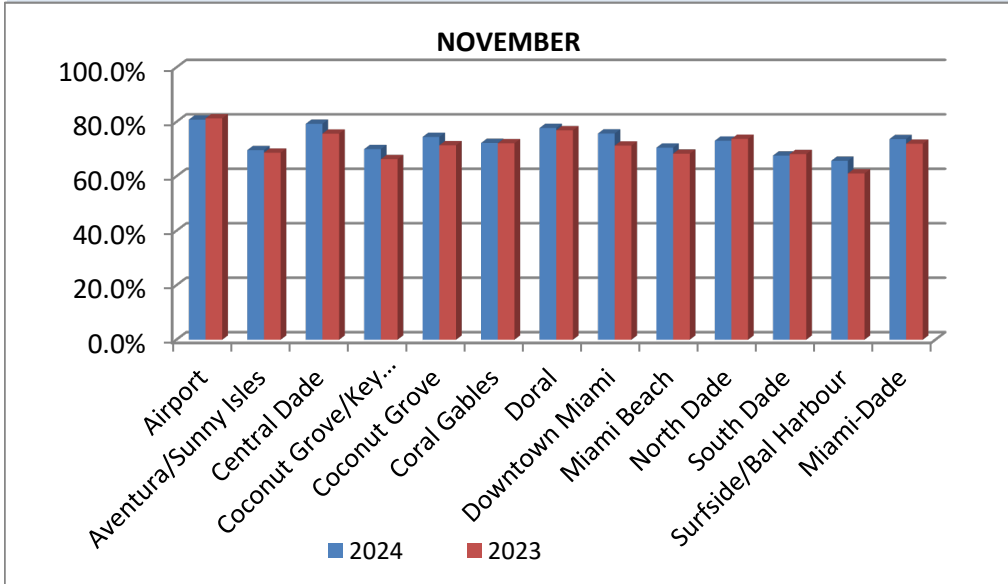


GREATER MIAMI CONVENTION AND VISITORS BUREAU

MIAMI-DADE OCCUPANCY BY REGION

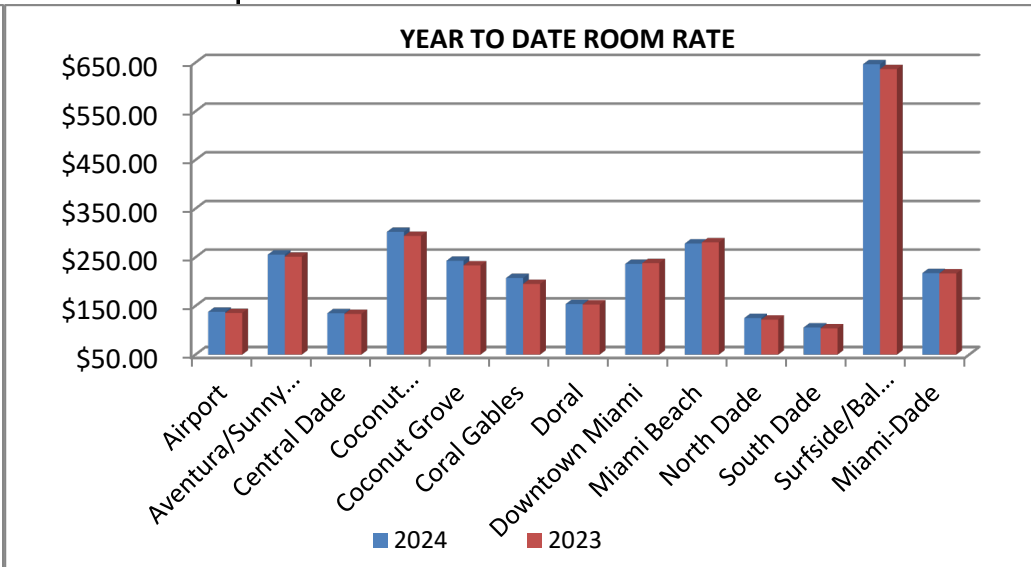
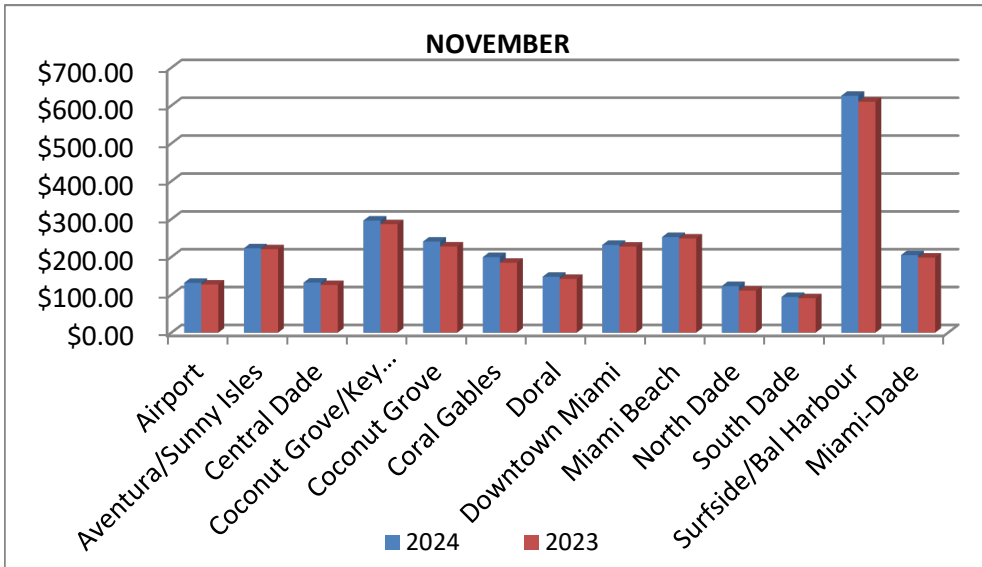
	NOVEMBER			YEAR TO DATE		
	2024	2023	% Change 24 vs 23	2024	2023	% Change 24 vs 23
Airport	80.8%	81.3%	-0.6%	81.4%	81.1%	0.4%
Aventura/Sunny Isles	69.6%	68.7%	1.4%	70.2%	66.7%	5.2%
Central Dade	79.3%	75.7%	4.8%	78.5%	75.6%	3.8%
Coconut Grove/Key Biscayne	70.0%	66.3%	5.6%	69.6%	66.4%	4.8%
Coconut Grove	74.5%	71.4%	4.3%	72.6%	70.2%	3.4%
Coral Gables	72.3%	72.1%	0.2%	72.6%	71.2%	1.9%
Doral	77.7%	76.9%	1.1%	78.8%	78.8%	0.0%
Downtown Miami	75.7%	71.3%	6.3%	71.5%	66.5%	7.5%
Miami Beach	70.5%	68.3%	3.2%	71.8%	70.0%	2.6%
North Dade	73.1%	73.8%	-0.9%	72.0%	71.2%	1.1%
South Dade	67.6%	68.2%	-0.8%	71.0%	71.1%	-0.2%
Surfside/Bal Harbour	65.7%	61.1%	7.6%	60.3%	59.2%	1.8%
Miami-Dade	73.7%	72.0%	2.4%	73.6%	71.6%	2.8%



GREATER MIAMI CONVENTION AND VISITORS BUREAU

MIAMI-DADE ROOM RATE BY REGION

	<u>NOVEMBER</u>			<u>YEAR TO DATE</u>		
	<u>2024</u>	<u>2023</u>	<u>% Change 24 vs 23</u>	<u>2024</u>	<u>2023</u>	<u>% Change 24 vs 23</u>
Airport	\$131.63	\$127.15	3.5%	\$137.93	\$135.56	1.8%
Aventura/Sunny Isles	\$222.88	\$220.24	1.2%	\$255.48	\$251.24	1.7%
Central Dade	\$132.32	\$125.97	5.0%	\$135.02	\$133.54	1.1%
Coconut Grove/Key Biscayne	\$296.09	\$286.39	3.4%	\$302.26	\$293.84	2.9%
Coconut Grove	\$240.67	\$227.60	5.7%	\$242.85	\$233.26	4.1%
Coral Gables	\$199.61	\$184.55	8.2%	\$207.43	\$195.14	6.3%
Doral	\$147.49	\$141.92	3.9%	\$153.86	\$153.02	0.5%
Downtown Miami	\$231.84	\$227.28	2.0%	\$236.43	\$238.08	-0.7%
Miami Beach	\$252.57	\$248.71	1.6%	\$278.22	\$280.68	-0.9%
North Dade	\$123.05	\$110.85	11.0%	\$125.12	\$121.86	2.7%
South Dade	\$94.21	\$90.85	3.7%	\$105.74	\$103.97	1.7%
Surfside/Bal Harbour	\$625.76	\$610.01	2.6%	\$646.54	\$636.62	1.6%
Miami-Dade	\$204.87	\$198.31	3.3%	\$217.51	\$216.87	0.3%



GREATER MIAMI CONVENTION AND VISITORS BUREAU

MIAMI-DADE REV PAR BY REGION

	<u>NOVEMBER</u>			<u>YEAR TO DATE</u>		
	<u>2024</u>	<u>2023</u>	<u>% Change 24 vs 23</u>	<u>2024</u>	<u>2023</u>	<u>% Change 24 vs 23</u>
Airport	\$106.40	\$103.37	2.9%	\$112.32	\$109.94	2.2%
Aventura/Sunny Isles	\$155.17	\$151.27	2.6%	\$179.41	\$167.69	7.0%
Central Dade	\$104.91	\$95.33	10.1%	\$106.01	\$101.00	5.0%
Coconut Grove/Key Biscayne	\$207.29	\$189.92	9.1%	\$210.42	\$195.15	7.8%
Coconut Grove	\$179.23	\$162.49	10.3%	\$176.20	\$163.68	7.7%
Coral Gables	\$144.23	\$133.11	8.4%	\$150.52	\$138.90	8.4%
Doral	\$114.67	\$109.16	5.1%	\$121.22	\$120.59	0.5%
Downtown Miami	\$175.60	\$162.01	8.4%	\$169.08	\$158.42	6.7%
Miami Beach	\$178.09	\$169.93	4.8%	\$199.79	\$196.38	1.7%
North Dade	\$89.92	\$81.76	10.0%	\$90.07	\$86.77	3.8%
South Dade	\$63.70	\$61.94	2.9%	\$75.03	\$73.94	1.5%
Surfside/Bal Harbour	\$411.13	\$372.51	10.4%	\$389.73	\$376.94	3.4%
Miami-Dade	\$150.95	\$142.71	5.8%	\$160.07	\$155.31	3.1%

